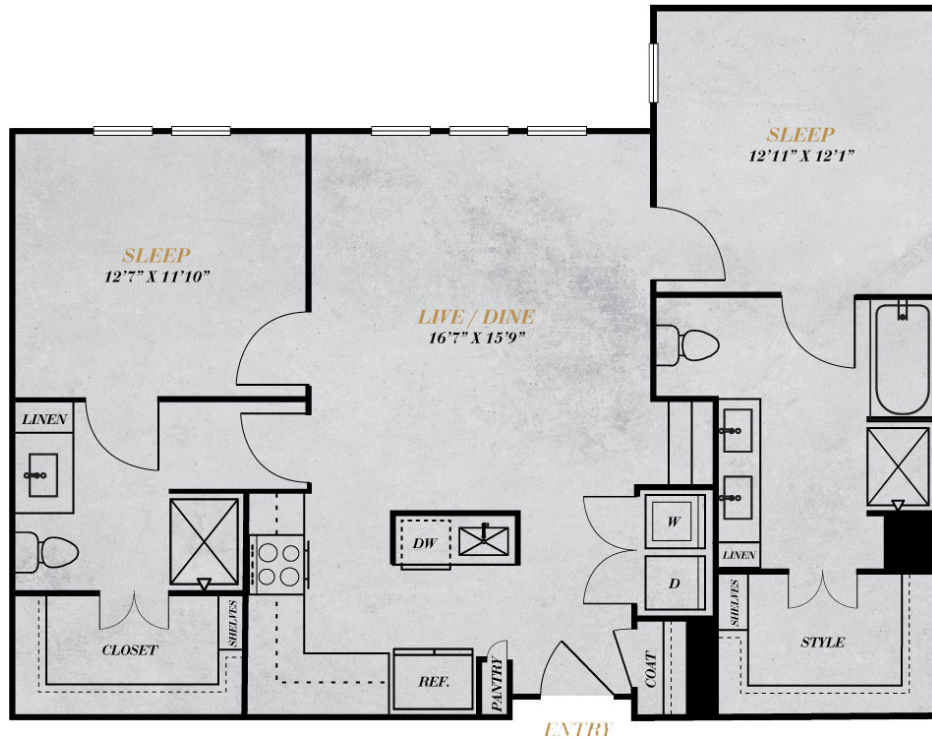


B3

2 BED / 2 BATH

1173

SQ. FT.



999 South Harwood Street | Dallas, Texas 75201

ameliaatfarmersmarket.com

Floor plans are artist's rendering. All dimensions are approximate. Actual product and specifications may vary in dimension or detail. Not all features are available in every apartment. Prices and availability are subject to change. Please see a representative for details.